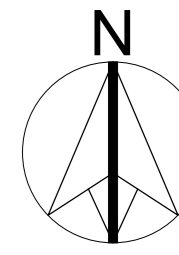
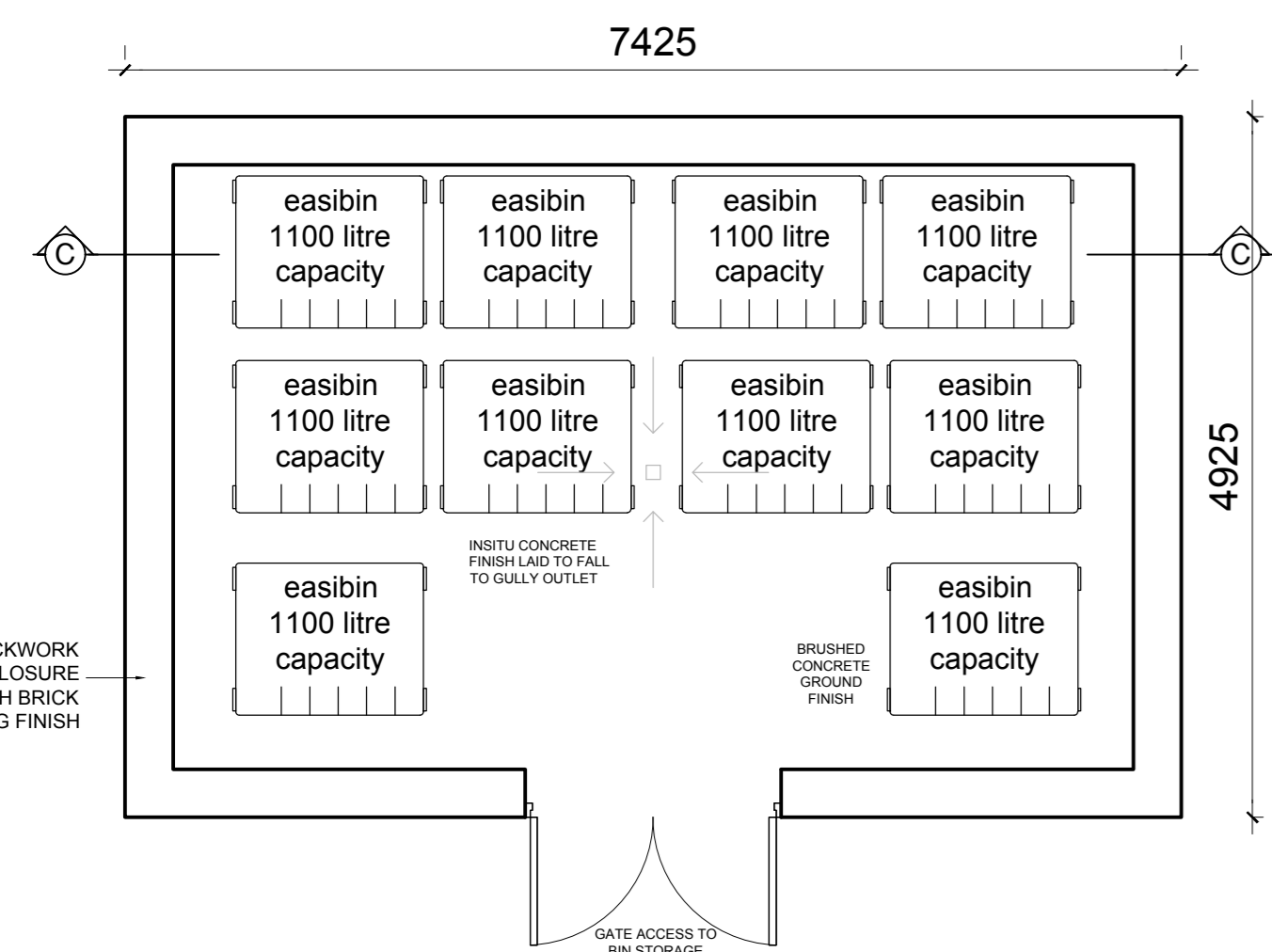


# KEY PLAN

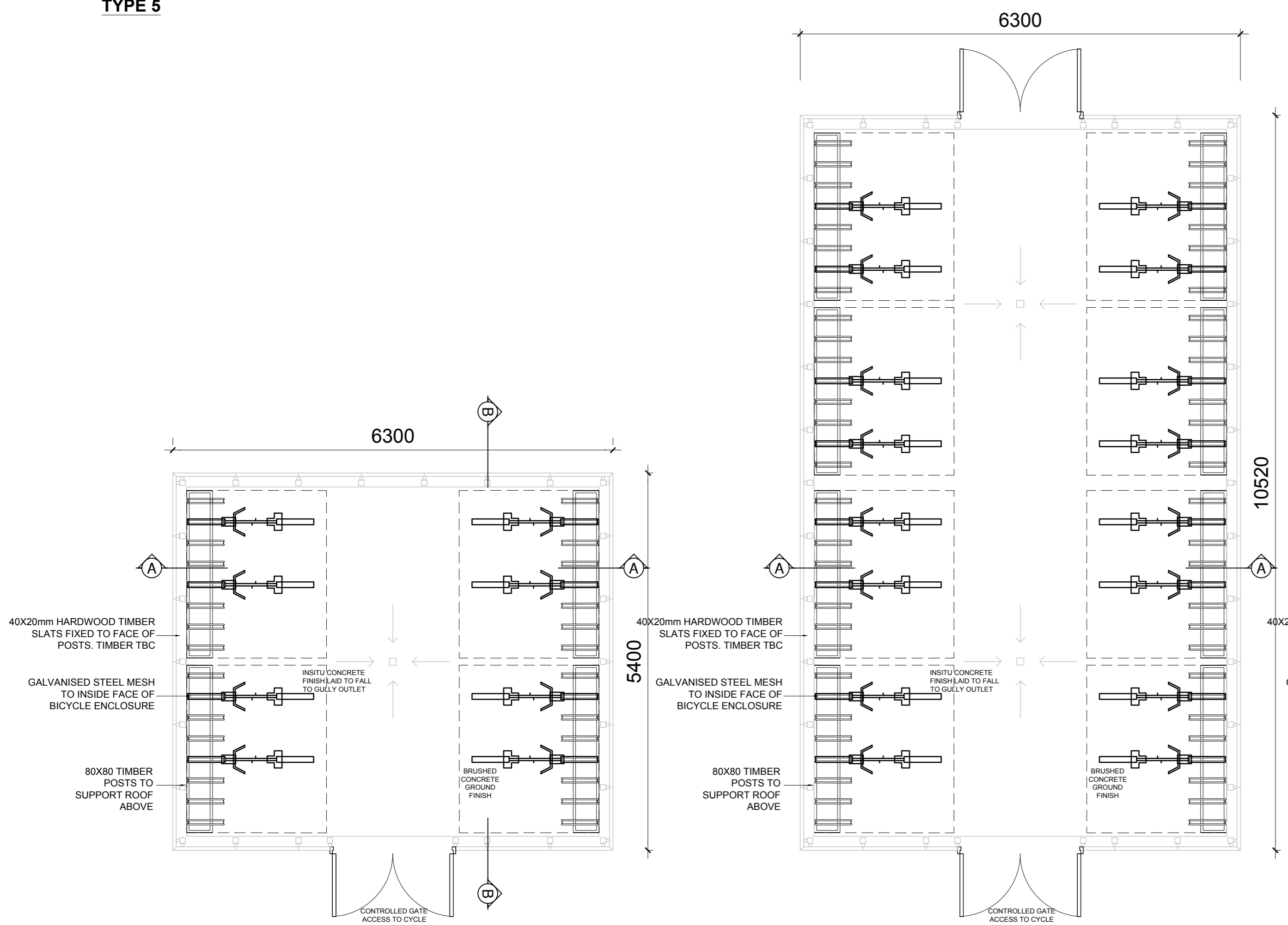
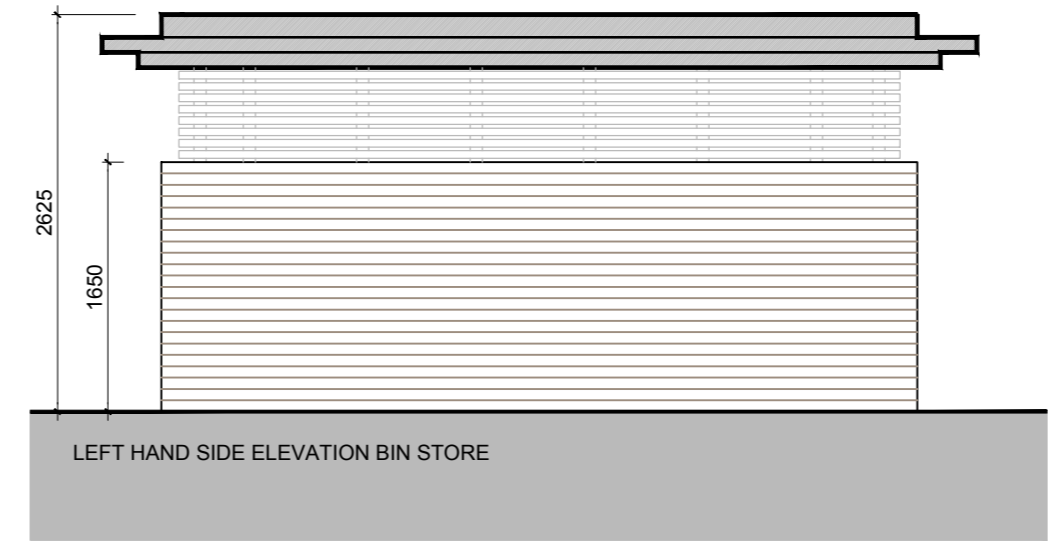
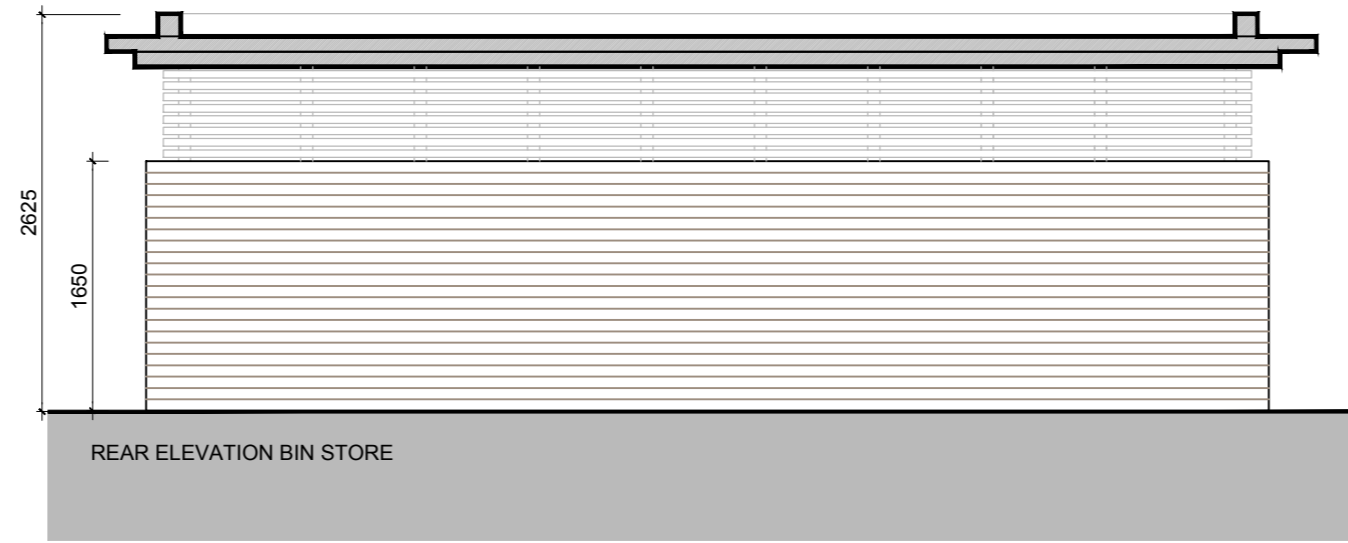
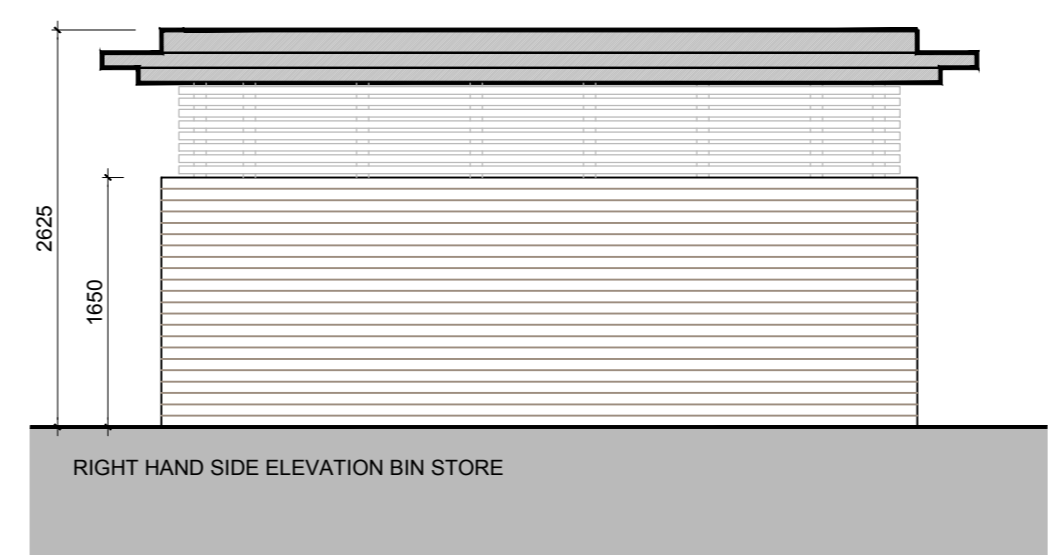
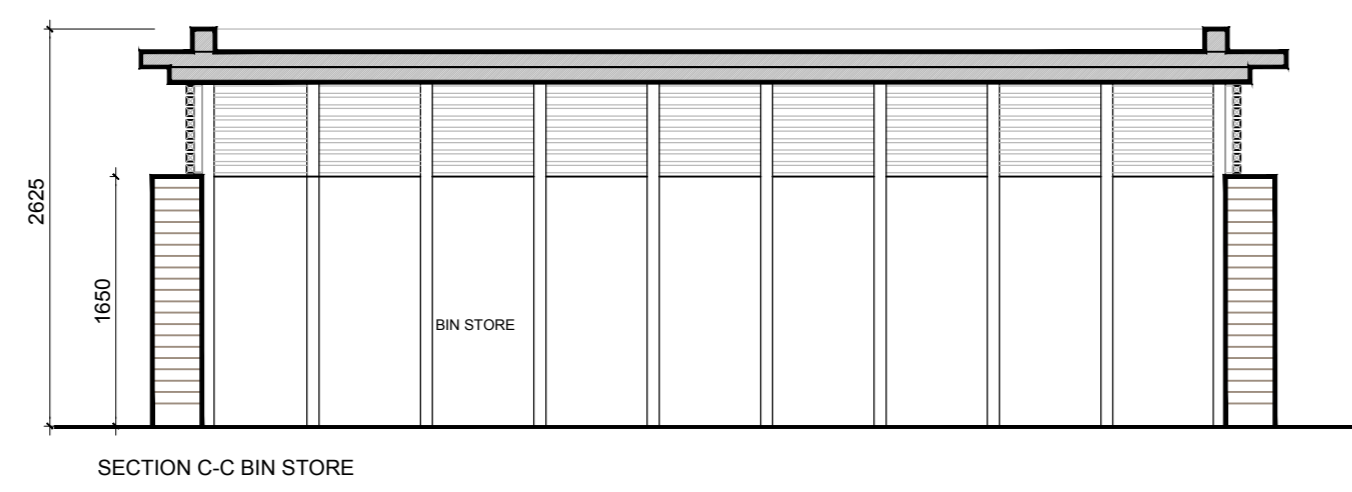


### OUTLINE SPECIFICATION:

- BRICK WALLS TO SELECTED COLOUR TO BIN STORE WALLS.
- 50 X50MM HARDWOOD TIMBER LATTES TO BICYCLE STORE WALLS AND HIGH LEVEL BIN STORE ENCLOSURE.
- LOUVRED TIMBER / ALUMINIUM DOORS TO BIN STORE.
- TIMBER POSTS TO SUPPORT METAL CLADDING ROOF OVER BIN AND BICYCLE STORE.
- ENCLOSURE TO BE DRAINED AND PROVIDED WITH A POWER AND WATER SUPPLY.

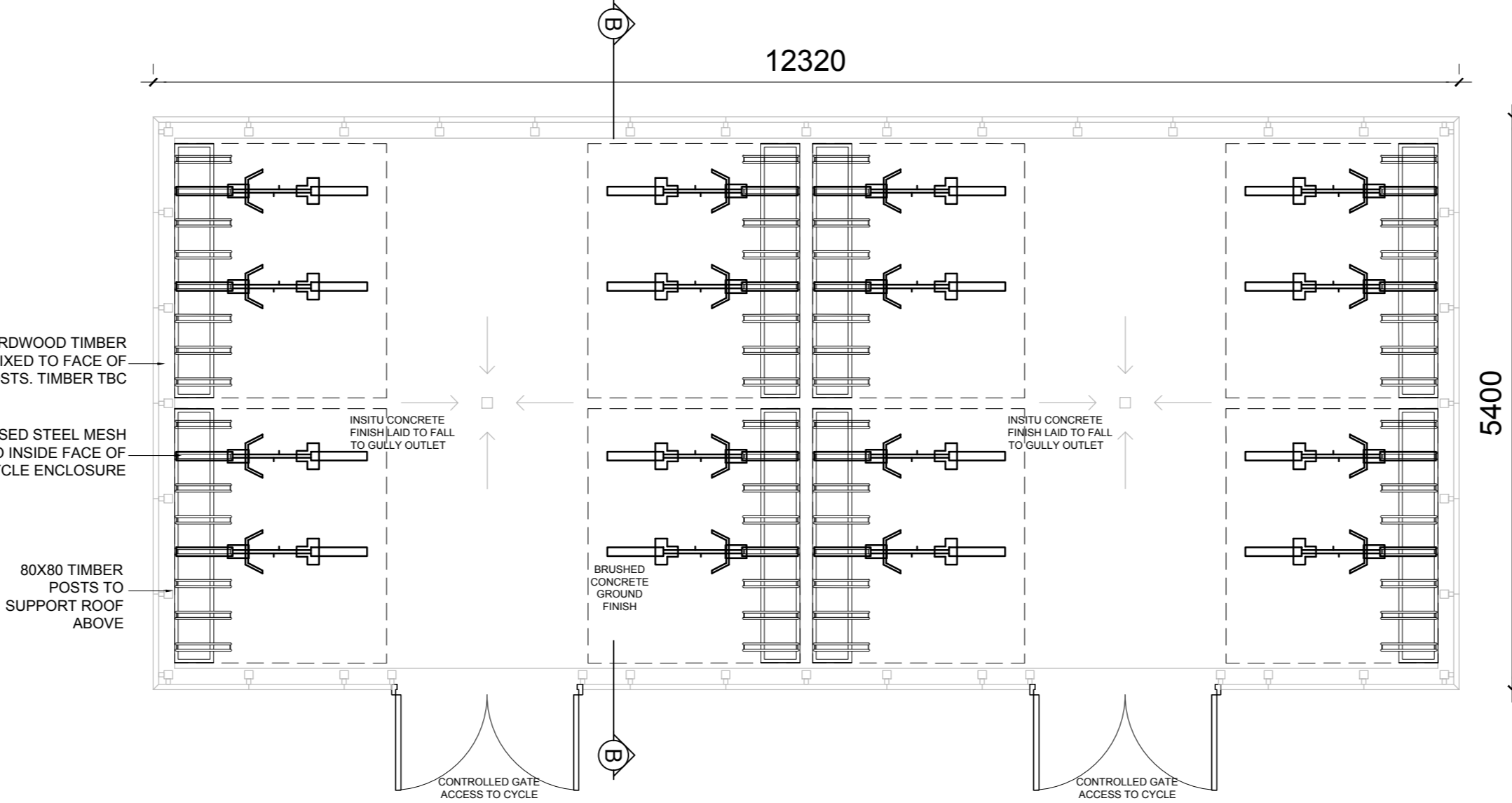


**BIN/ BICYCLE STORE ENCLOSURE LAYOUT PLAN- TYPE 5**

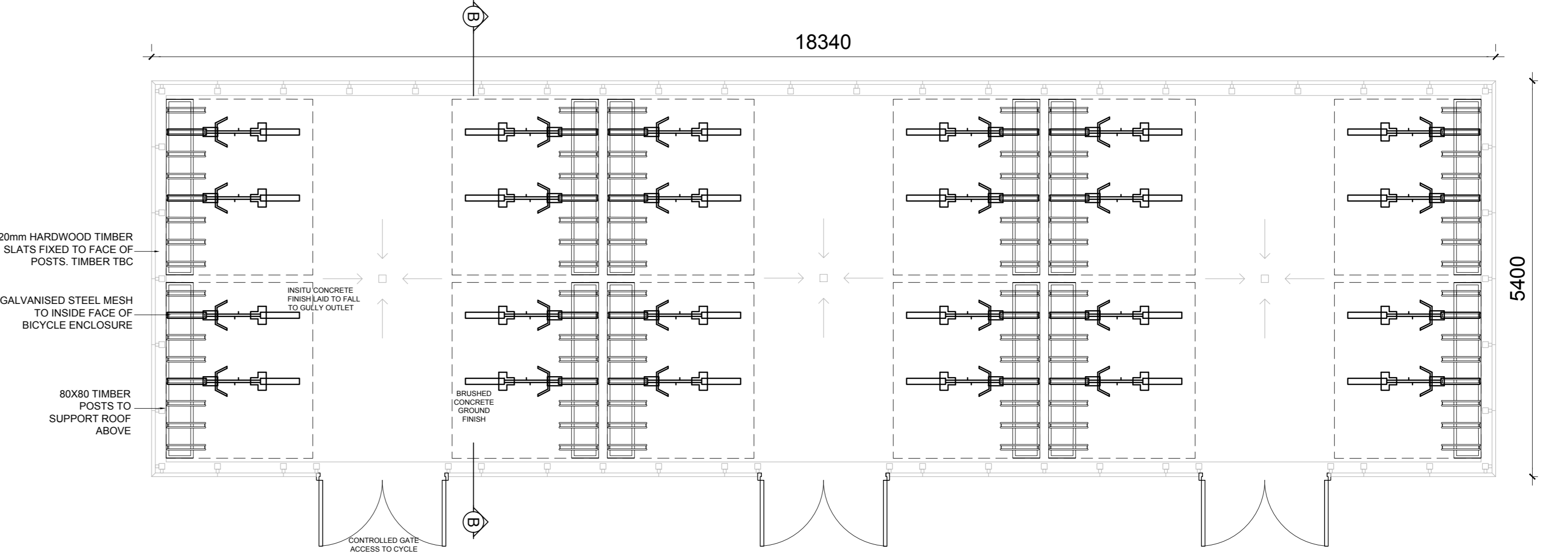


**BIN/ BICYCLE STORE ENCLOSURE LAYOUT PLAN- TYPE 1**

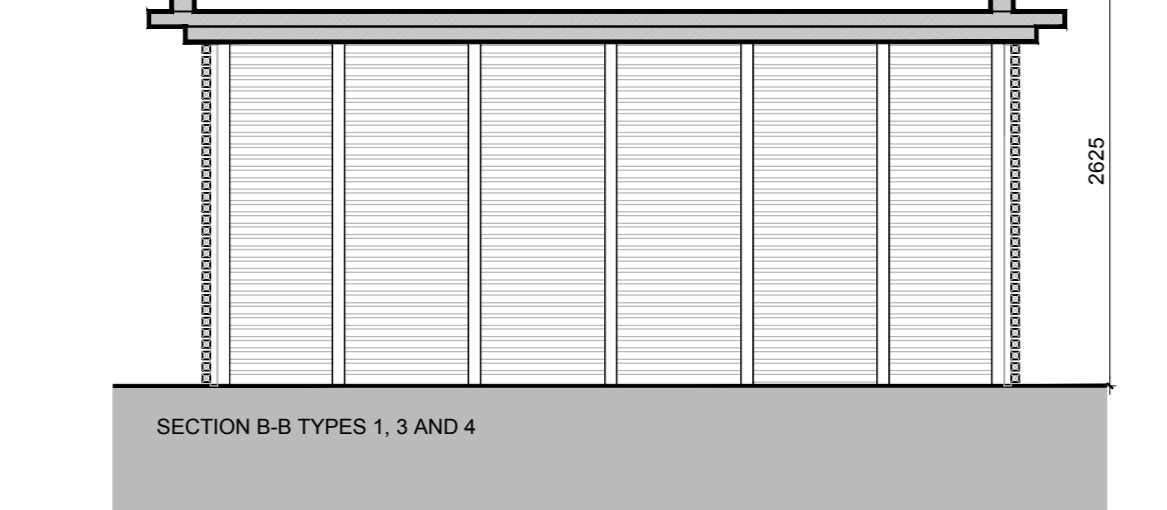
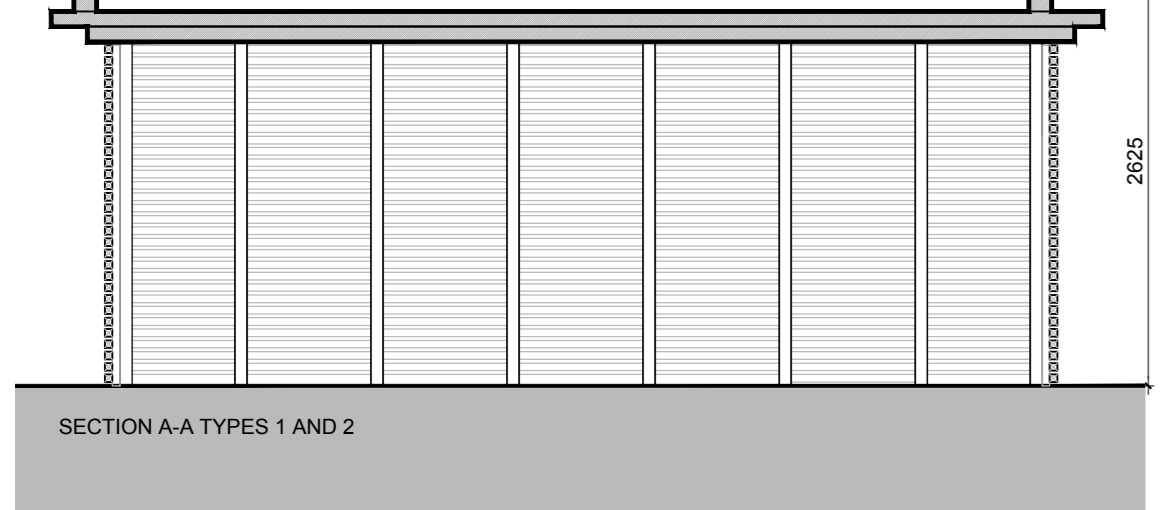
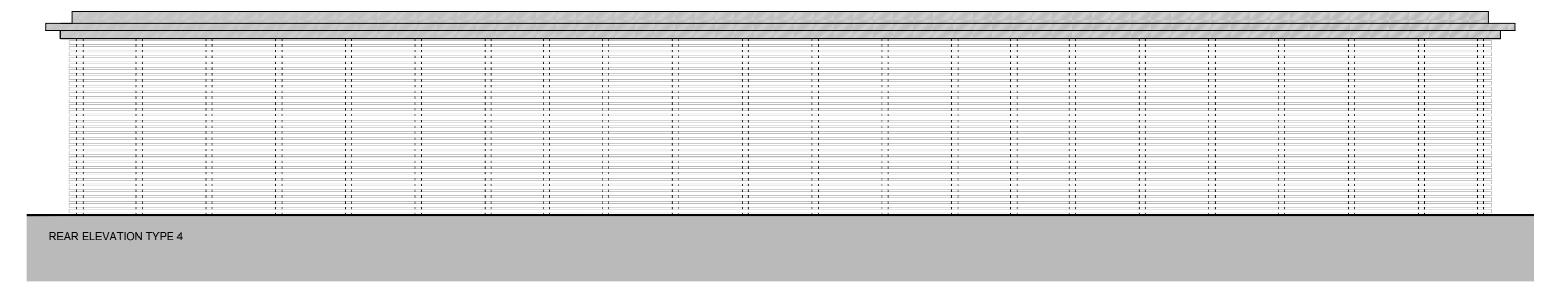
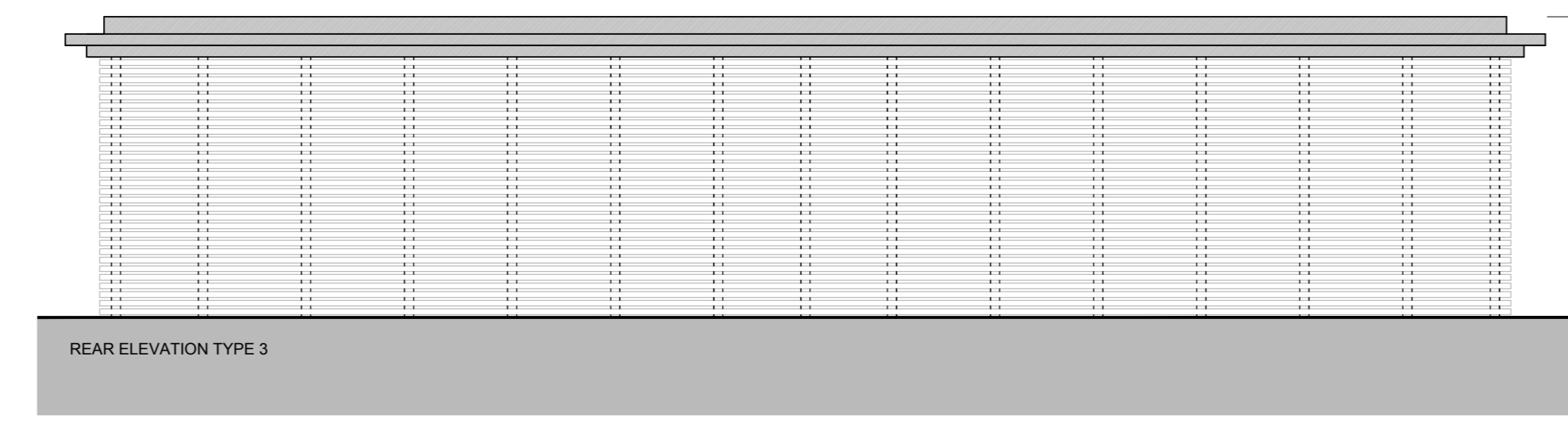
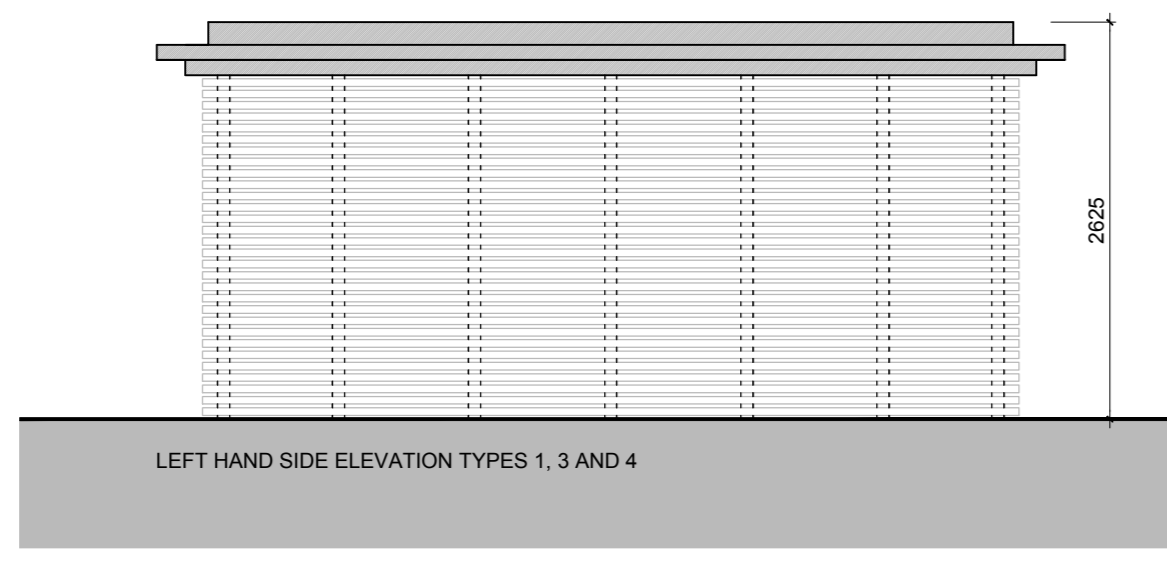
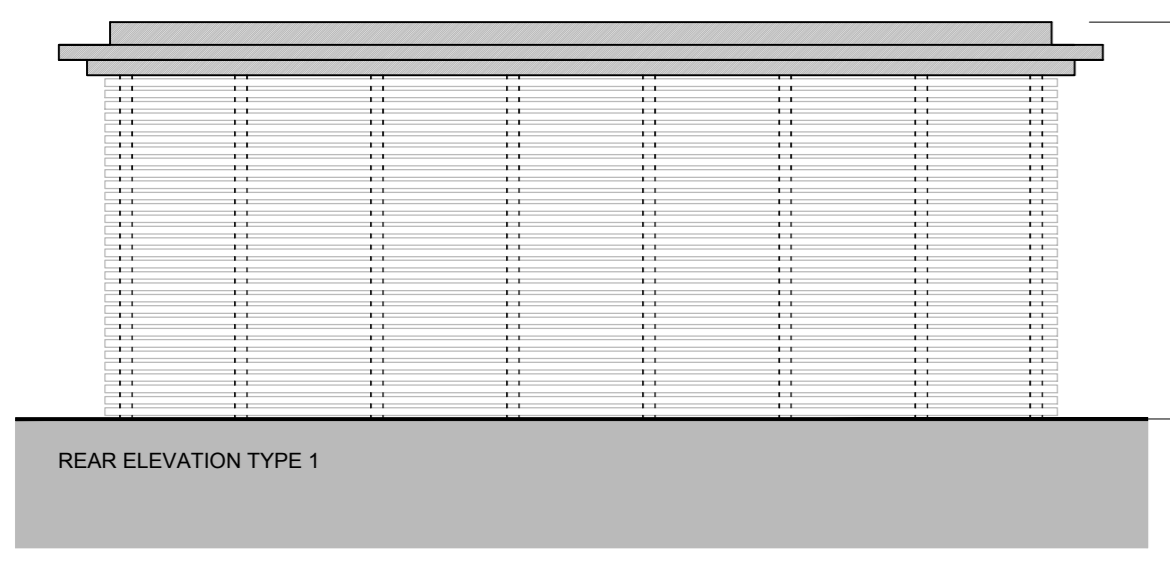
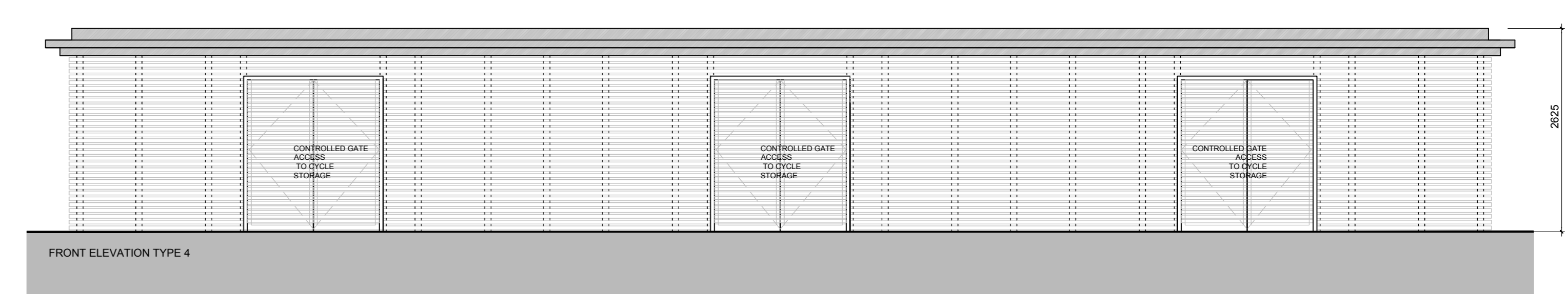
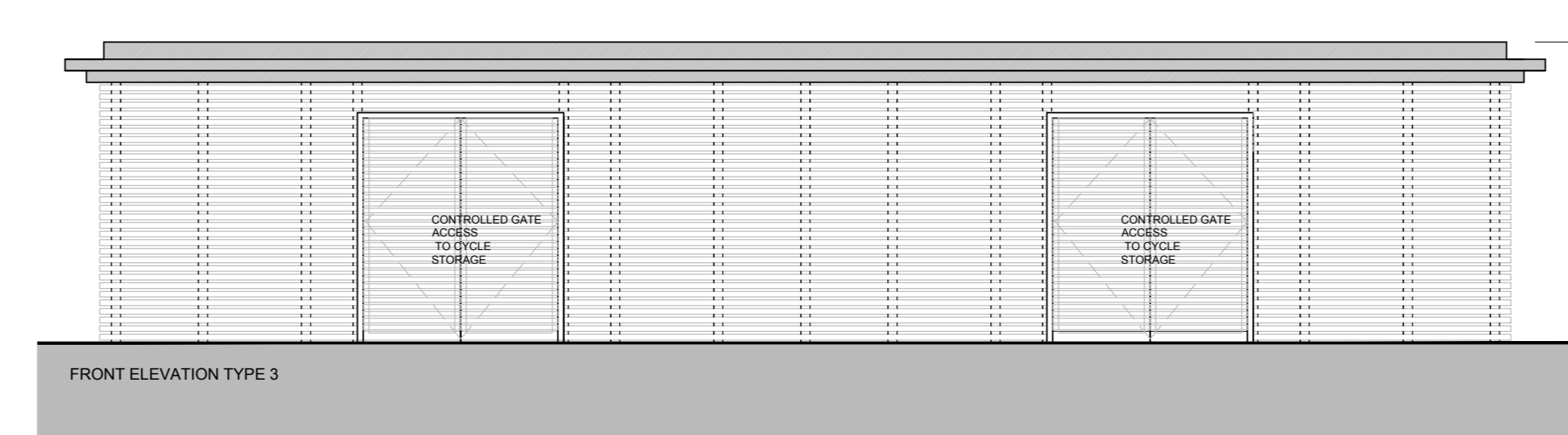
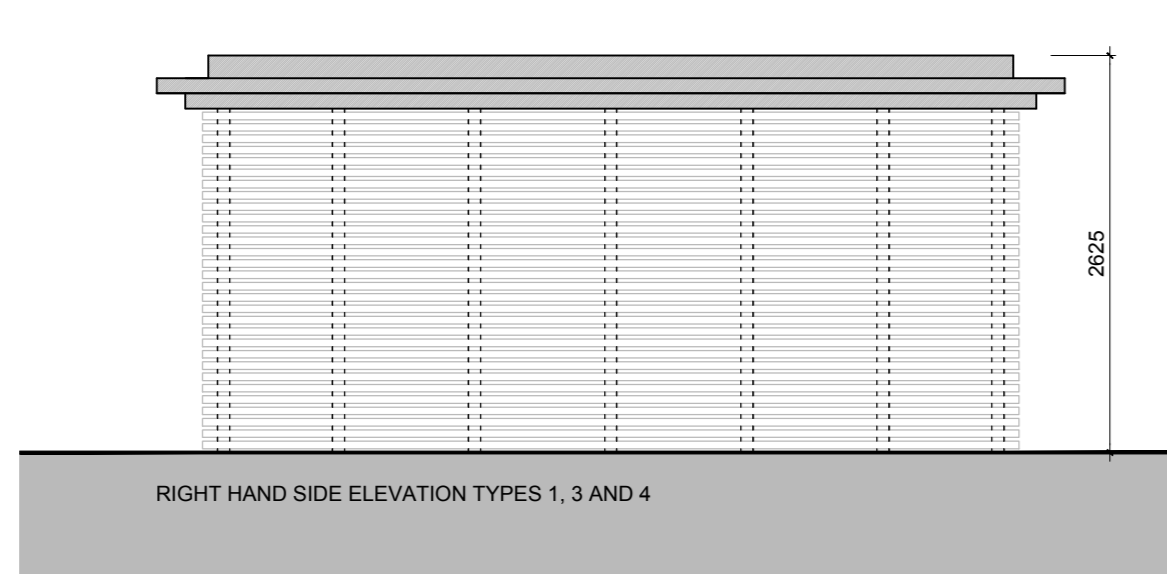
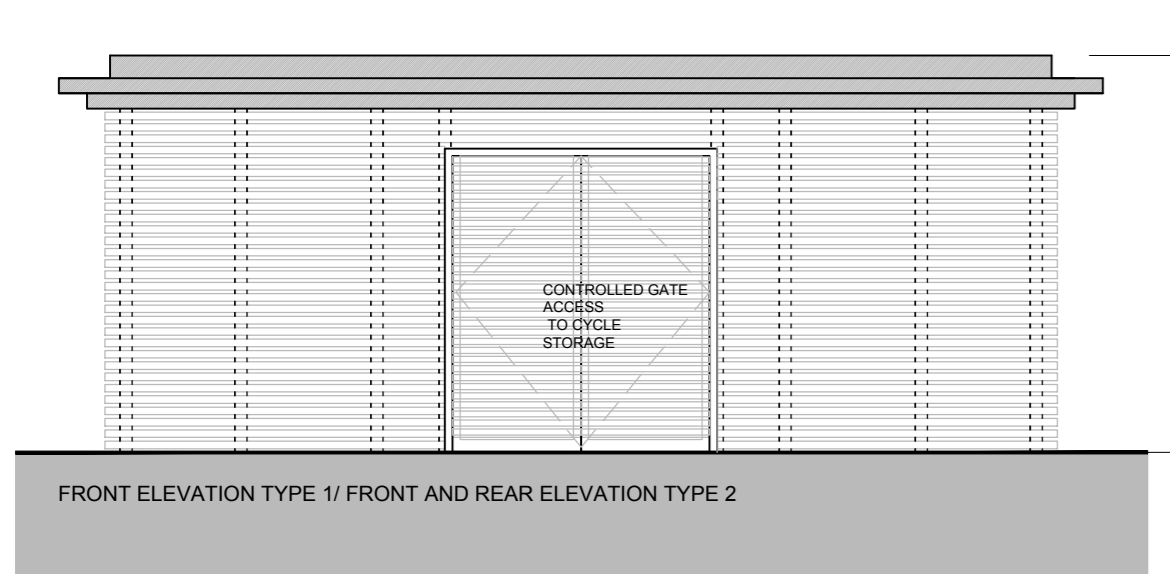
**BIN/ BICYCLE STORE ENCLOSURE LAYOUT PLAN- TYPE 2**



**BIN/ BICYCLE STORE ENCLOSURE LAYOUT PLAN- TYPE 3**



**BIN/ BICYCLE STORE ENCLOSURE LAYOUT PLAN- TYPE 4**



**NOTES:**  
DO NOT SCALE FROM DRAWINGS. WORK TO FIGURED DIMENSIONS ONLY. ARCHITECT TO BE NOTIFIED OF ALL DISCREPANCIES.

REVISIONS		
DATE	DESCRIPTION	No.

	<b>Capdoo, Clane</b> Communal Cycle and Refuse Store Details	DATE: Mar 2019 SCALE: 1:50 DRAWING NO: 16016 PL73	DRAWN BY: P.McH. CHECKED BY: P.McH. DATE: 16/03/19
	PROJECT FILE: Capdoo, Clane CLIENT: Communal Cycle and Refuse Store Details DRAWING NO: 16016 PL73	DATE: Mar 2019 SCALE: 1:50 DRAWING NO: 16016 PL73	DRAWN BY: P.McH. CHECKED BY: P.McH. DATE: 16/03/19